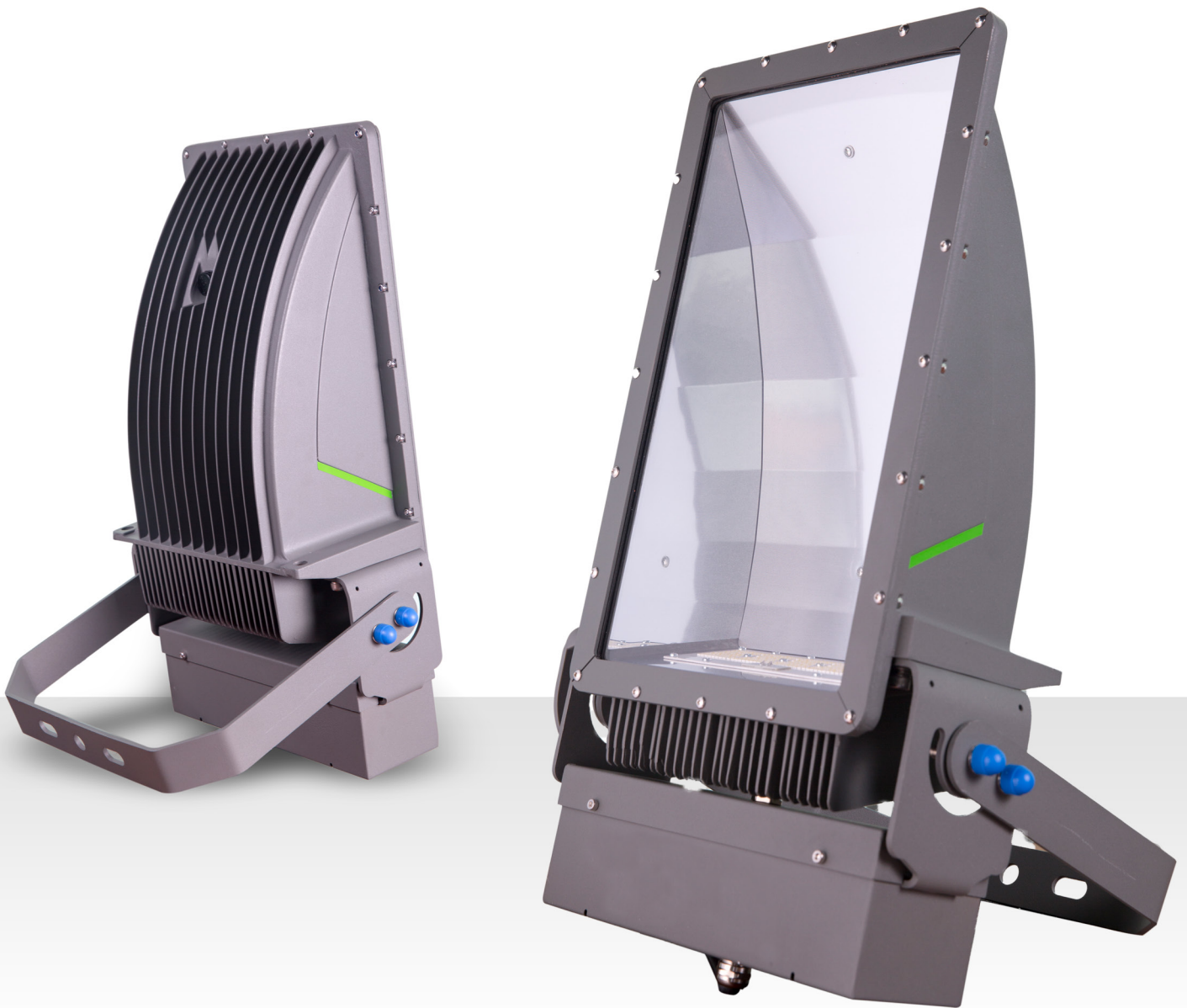


# STRATA

LED FLOODLIGHT

# 200W



**Brightman**<sup>TM</sup>  
design efficiency



# TECHNICAL DATA

## STRATA FLOODLIGHT 200W

Input Voltage	AC90-305V ~ 50/60 Hz
LED Chips	Nichia
Driver	Meanwell
LED Power	200W
Led Luminous Efficiency	140lm/W
Luminous Flux	28,000lm
Power Factor	>0.95
Colour Temperature	2700K-7000K
Colour Rendering Index	Ra≥70/80
Bean Angle	Asymmetric 145°
Illuminance Design	LED+lens
Working Temperature	-40°C ~ 70°C
Working Humidity	15%~ 90% RH
IP Rating	IP65
Net weight	9.5Kg
Life-span	>50,000hrs
Power Cable	1.0mm <sup>2</sup> Triple shield wire
Connection Wire	Brown=Live, Blue=Neutral, Yellow=Earth
Housing Material	Die Cast Aluminum
Housing Colour	Dark Grey
Mounting Options	Pole or Surface
Optional Extras	Daylight Sensor, Dali Dimmer



# DIMENSIONS

## STRATA FLOODLIGHT 200W

