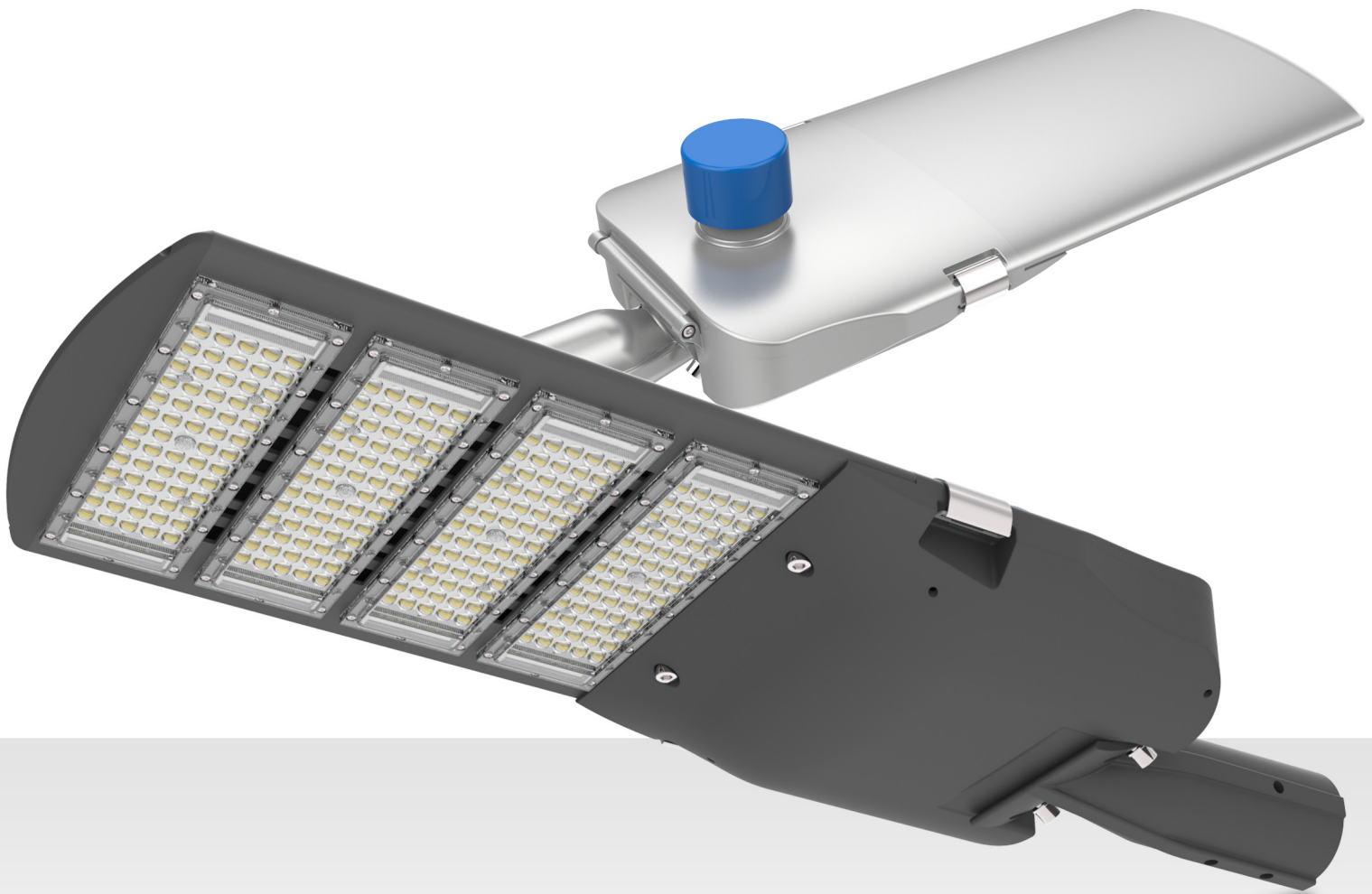


SIGMA

LED STREET LIGHT

200W



Brightman™
design efficiency



TECHNICAL DATA

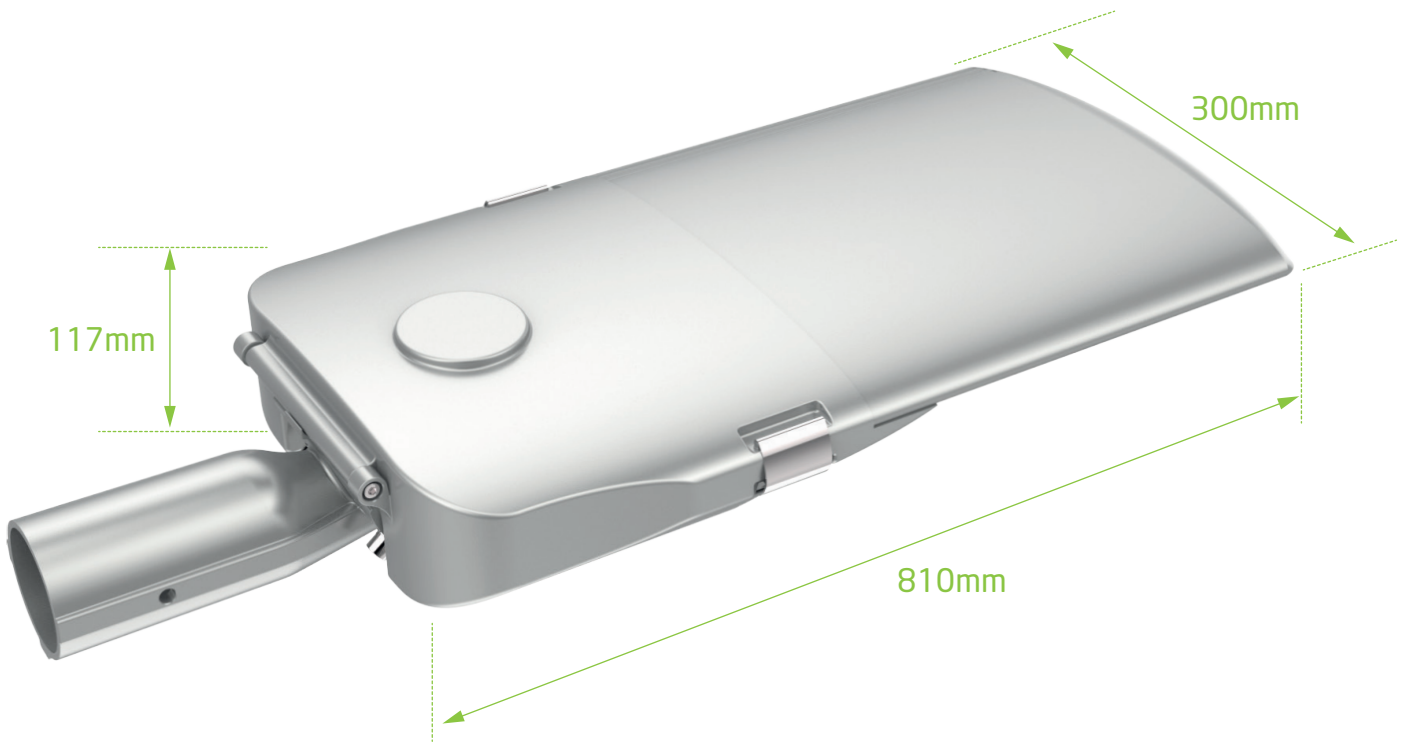
SIGMA STREET LIGHT 200W

Input Voltage	AC100-277V ~ 47/63 Hz
LED Chips	Nichia
Driver	Inventronics
LED Power	200W
Led Luminous Efficiency	140lm/W
Luminous Flux	28,000lm
Power Factor	>0.95
Colour Temperature	2500 to 5500K
Colour Rendering Index	Ra≥75
Beam Angle	70*150°(60*140°, 65*145° optional)
Illuminance Design	LED+lens
Working Temperature	-40°C ~ 45°C
Working Humidity	15%~ 90% RH
IP Rating	IP65
Net weight	7.8Kg
Life-span	>50,000hrs
Power Cable	1.0mm ² Triple shield wire
Connection Wire	Brown=Live, Blue=Neutral, Yellow=Earth
Housing Material	Die Cast Aluminum
Housing Colour	Dark Grey or Silver Grey
Mounting Options	Pole
Optional Extras	Daylight Sensor, Janus Control System



DIMENSIONS

SIGMA STREET LIGHT 200W



OPTIONAL DAYLIGHT SENSOR



Increased savings and reduce your carbon footprint with automdimming sensors

OPTIONAL CONTROL SYSTEM

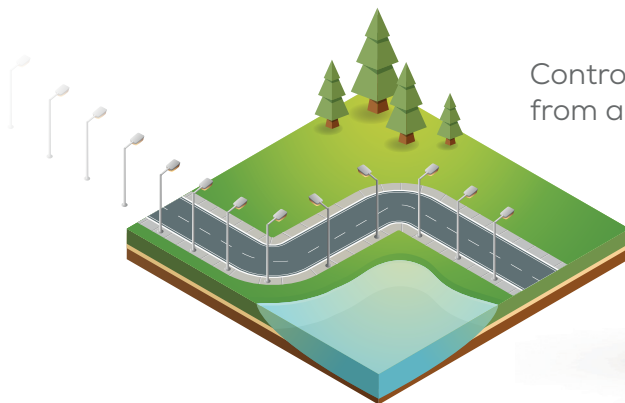
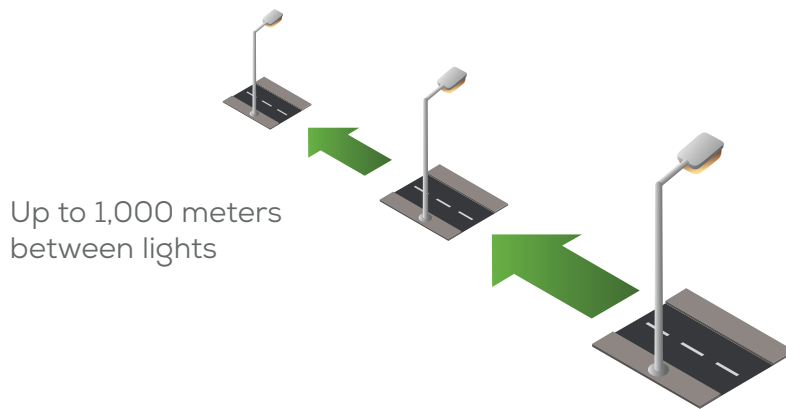
SIGMA STREET LIGHT 200W



Portable or static programmable touch screen control box



Existing powerline linking



Control up to 2000 Lights from a single access point



Intelligent Global or Group Dimming

