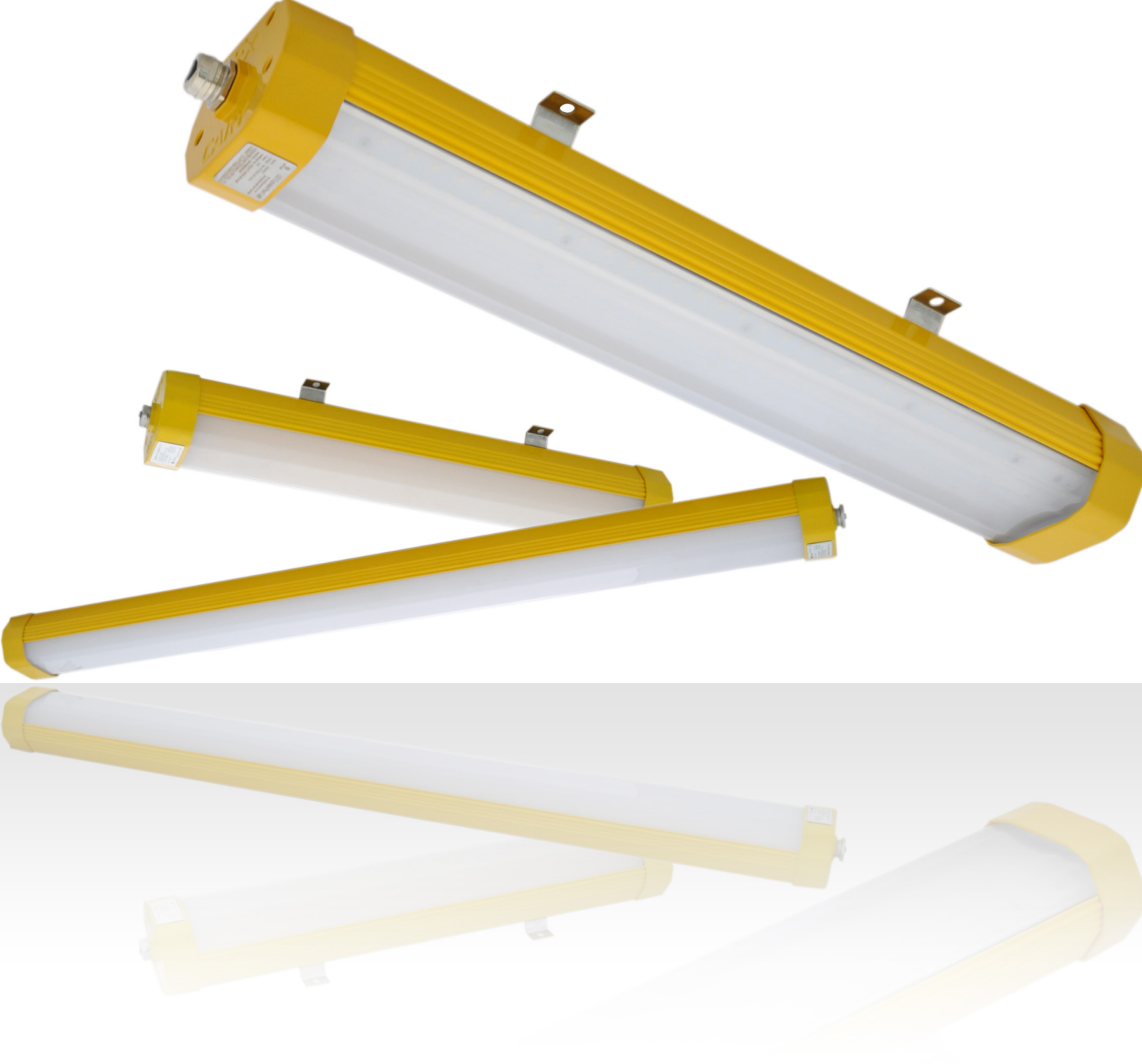


ATEX

LINEAR

24W



Brightman™
design efficiency



TECHNICAL DATA

ATEX CERTIFIED EXPLOSION PROOF

Input Voltage	AC100-277V ~ 50/60 Hz
LED Chips	Sanan SMD
Driver	Sosen or Mean Well
LED Power	24W
Led Luminous Efficiency	Clear: 117lm/w - Frosted: 96lm/w
Luminous Flux	Clear: 2,808lm - Frosted: 2,304lm
Power Factor	>0.90
Colour Temperature	5,700K, 4,000K, 2,700K
Colour Rendering Index	Ra≥70
Beam Angle	160°
Working Temperature	-30°C ~ 50°C
Working Humidity	15%~ 90% RH
IP Rating	IP68
Size	L = 381mm, W = 126mm, H = 88mm
Life-span	>50,000hrs
Power Cable	1.0mm ² Triple shield wire
Connection Wire	Brown=Live, Blue=Neutral, Yellow=Earth
Housing Material	Aluminium 6063
Lens	Clear or Frosted PC
Housing Colour	Yellow
Available Options	DALI Dimmer, Microwave or PIR Sensor

